

tabbies
A15-3
EXHIBIT
PUBLIC



- ⊕ Cemetery
- NonParticipating Residence
- Participating Residence
- Transmission

- Setbacks include the following:
- Public Roads (541 ft.)
 - NonParticipating Parcels (541 ft.)
 - Occupied Residences
 - NonParticipating (1000 ft.)
 - Participating (500 ft.)
 - Transmission Line (541 ft.)
 - Cemeteries (1000 ft.)
- Environmental Avoidance Area includes:
- Wetlands
 - Waterbodies
 - Prairie Grouse Leks
 - USFWS Conservation Easement
 - USFWS Grassland Easement
 - USFWS Wetland Easement Basins
 - Higher Quality Native Grasslands



Dakota Range Wind
Project Micrositing
 Grant and Codington County, SD
 45.159283, -97.058736

- Temporary MetTower, Existing
- PermanentMet, Proposed
- ▭ Project Area Boundary
- Preliminary Turbine Location (LAY 041)
- Proposed Spare Turbine Location (LAY 041)
- Moved Turbine (LAY 038)
- Removed Turbine (LAY 038)
- ▭ Laydown Yard
- ▭ O and M Facility
- ▭ Project Substation
- ▭ Interconnect Switchyard
- ▭ Setbacks
- ▭ Environmental Avoidance Area
- 500 ft. Turbine Flexibility Area

Note:
 1. Turbines are not drawn to scale.
 2. Turbine numbering is not sequential.

0 0.32 0.65 1.3 1.95 2.6
 0 0.275 0.55 1.1 1.65 2.2
 Kilometers Miles

Coordinate System: NAD 1983 StatePlane South Dakota North FIPS 4001 Feet
 Projection: Lambert Conformal Conic
 Datum: North American 1983
 False Easting: 1,968,500.0000
 False Northing: 0.0000
 Units: Feet US

APEX
 CLEAN ENERGY

Date: 6/8/2018
 Author: MR

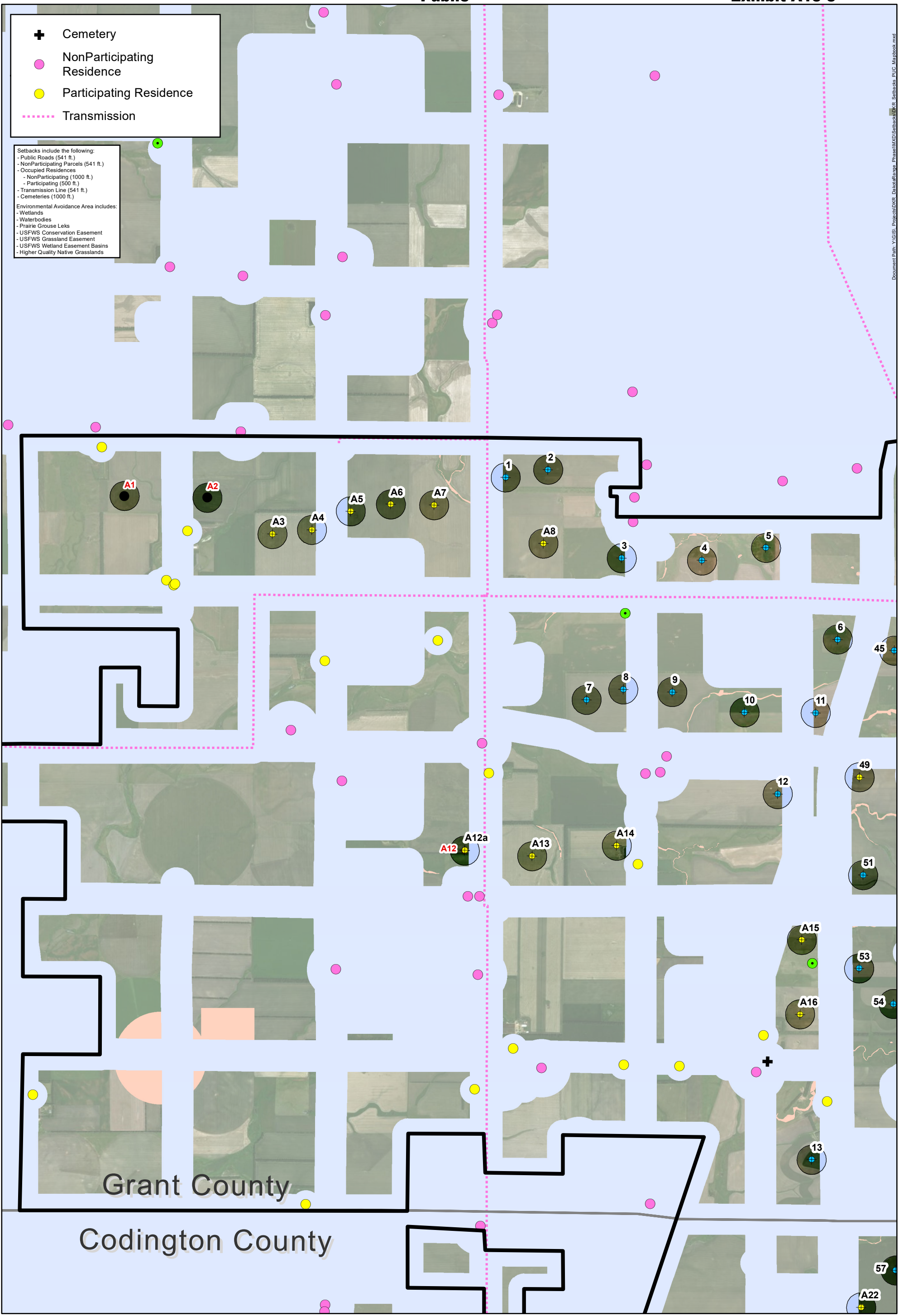
- + Cemetery
- NonParticipating Residence
- Participating Residence
- ⋯ Transmission

Setbacks include the following:

- Public Roads (541 ft.)
- NonParticipating Parcels (541 ft.)
- Occupied Residences
 - NonParticipating (1000 ft.)
 - Participating (500 ft.)
- Transmission Line (541 ft.)
- Cemeteries (1000 ft.)

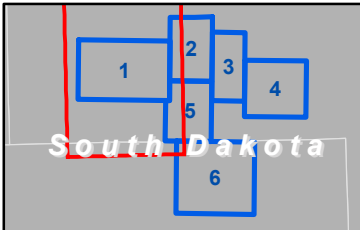
Environmental Avoidance Area includes:

- Wetlands
- Waterbodies
- Prairie Grouse Leaks
- USFWS Conservation Easement
- USFWS Grassland Easement
- USFWS Wetland Easement Basins
- Higher Quality Native Grasslands



Grant County

Codington County



Dakota Range Wind

Project Micrositing

Grant and Codington County, SD

45.159283, -97.058736

+ Preliminary Turbine Location (LAY 041)	 Project Area Boundary
+ Proposed Spare Turbine Location (LAY 041)	 Setbacks
+ Moved Turbine (LAY 038)	 Environmental Avoidance Area
● Removed Turbine (LAY 038)	 500 ft. Turbine Flexibility Area
● Temporary MetTower, Existing	

Note:

1. Turbines are not drawn to scale.
2. Turbine numbering is not sequential.

0 0.125 0.25 0.5 0.75 1 Kilometers

0 0.1 0.2 0.4 0.6 0.8 Miles

Coordinate System: NAD 1983 StatePlane South Dakota North FIPS 4001 Feet
 Projection: Lambert Conformal Conic
 Datum: North American 1983
 False Easting: 1,968,500.0000
 False Northing: 0.0000
 Units: Foot US

APEX
CLEAN ENERGY

Date: 6/8/2018
Author: MR

Document Path: Y:\GIS\Projects\DRG_Cadastre\Range_Phase1\MXD\Setback\DR_Settbacks_PUC_Mapbook.mxd

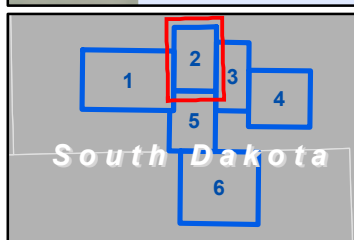
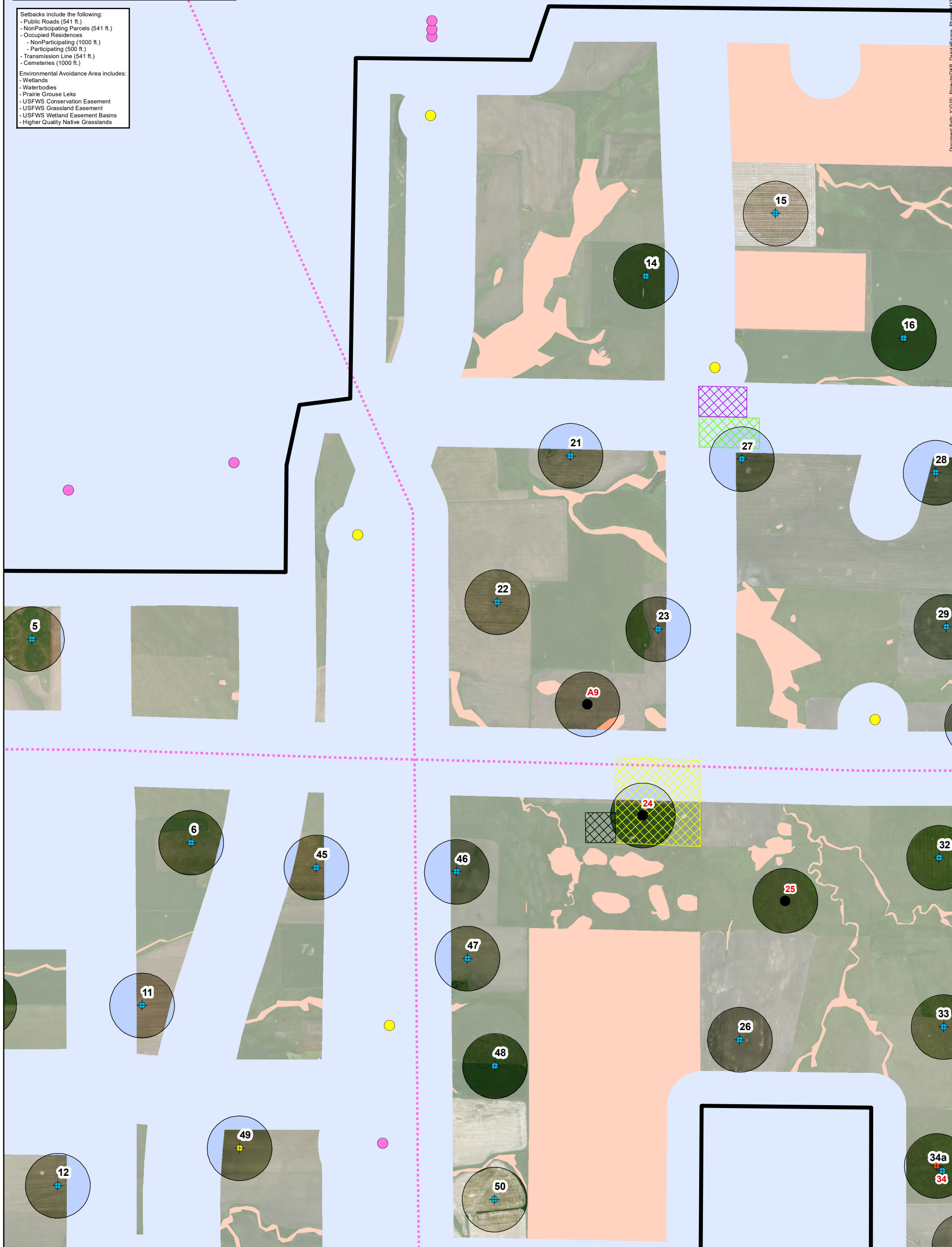
- Cemetery
- NonParticipating Residence
- Participating Residence
- Transmission

Setbacks include the following:

- Public Roads (541 ft.)
- NonParticipating Parcels (541 ft.)
- Occupied Residences
 - NonParticipating (1000 ft.)
 - Participating (500 ft.)
- Transmission Line (541 ft.)
- Cemeteries (1000 ft.)

Environmental Avoidance Area includes:

- Wetlands
- Waterbodies
- Prairie Grouse Leaks
- USFWS Conservation Easement
- USFWS Grassland Easement
- USFWS Wetland Easement Basins
- Higher Quality Native Grasslands



Dakota Range Wind
Project Micrositing
Grant and Codington County, SD
 45.159283, -97.058736

- Preliminary Turbine Location (LAY 041)
- Proposed Spare Turbine Location (LAY 041)
- Moved Turbine (LAY 038)
- Removed Turbine (LAY 038)
- 500 ft. Turbine Flexibility Area
- Project Area Boundary
- Laydown Yard
- O and M Facility
- Project Substation
- Interconnect Switchyard
- Setbacks
- Environmental Avoidance Area

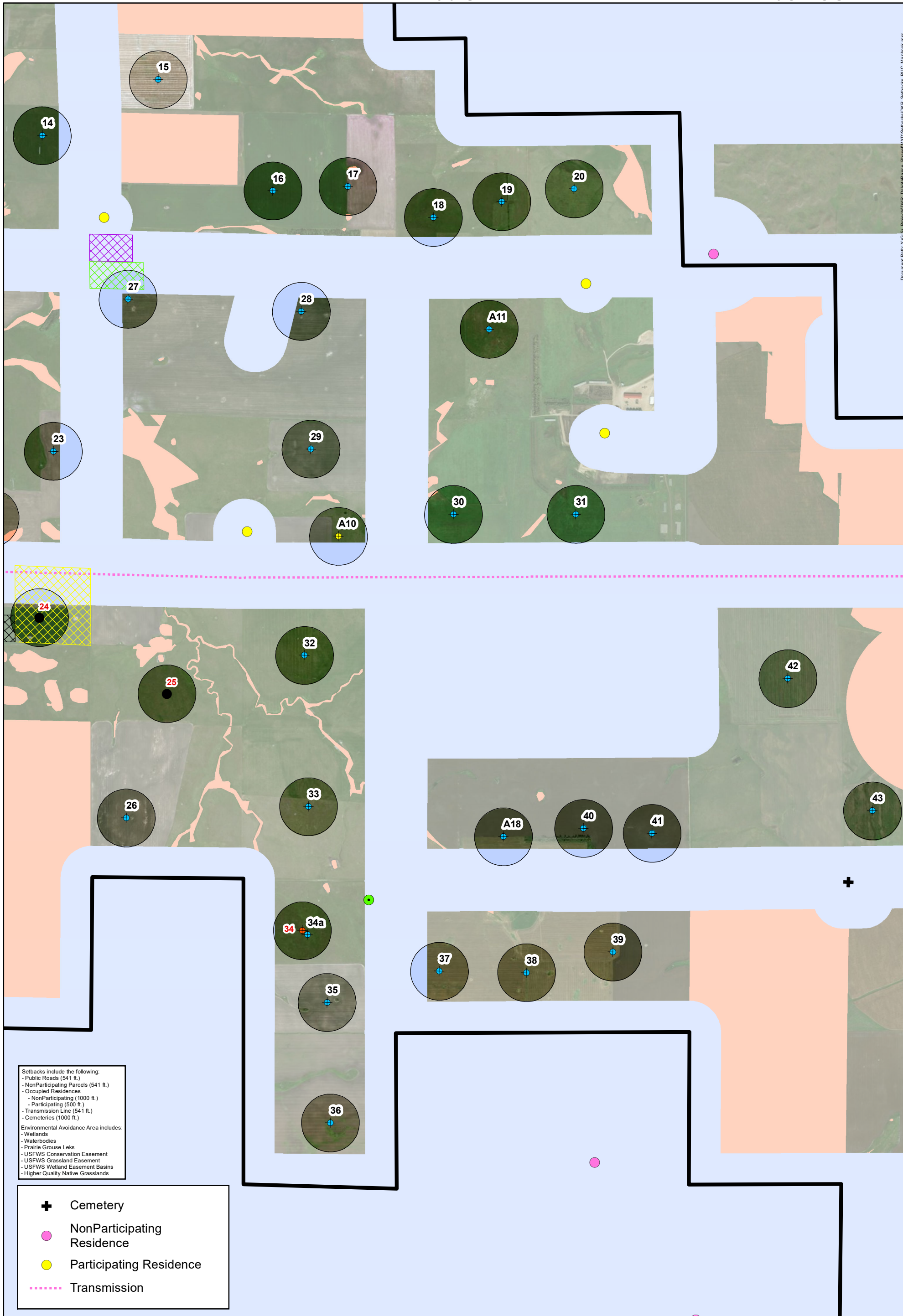
Note:
 1. Turbines are not drawn to scale.
 2. Turbine numbering is not sequential.

0 0.05 0.1 0.2 0.3 0.4 Kilometers
 0 0.05 0.1 0.2 0.3 0.4 Miles

Coordinate System: NAD 1983 StatePlane South Dakota North FIPS 4001 Feet
 Projection: Lambert Conformal Conic
 Datum: North American 1983
 False Easting: 1,968,500.0000
 False Northing: 0.0000
 Units: Foot US

APEX CLEAN ENERGY
 Date: 6/8/2018
 Author: MR

Document Path: Y:\GIS\Projects\DRG_Casefile\Range_Phase1\XWD\Setbacks\DRR_Setbacks_PUC_Mapbook.mxd



Document Path: Y:\GIS\Projects\DRR\Seaback\DRR_Seaback_PUC_Mapbook.mxd

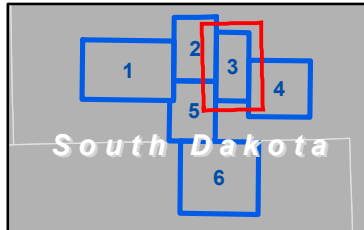
Setbacks include the following:

- Public Roads (541 ft.)
- NonParticipating Parcels (541 ft.)
- Occupied Residences
 - NonParticipating (1000 ft.)
 - Participating (500 ft.)
- Transmission Line (541 ft.)
- Cemeteries (1000 ft.)

Environmental Avoidance Area includes:

- Wetlands
- Waterbodies
- Prairie Grouse Leaks
- USFWS Conservation Easement
- USFWS Grassland Easement
- USFWS Wetland Easement Basins
- Higher Quality Native Grasslands

- ⊕ Cemetery
- NonParticipating Residence
- Participating Residence
- Transmission



Dakota Range Wind
Project Micrositing
Grant and Codington County, SD
 45.159283, -97.058736

- ⊕ Preliminary Turbine Location (LAY 041)
- ⊕ Proposed Spare Turbine Location (LAY 041)
- ⊕ Moved Turbine (LAY 038)
- ⊕ Removed Turbine (LAY 038)
- Temporary MetTower, Existing
- 500 ft. Turbine Flexibility Area
- ▭ Project Area Boundary
- ▭ Laydown Yard
- ▭ O and M Facility
- ▭ Project Substation
- ▭ Interconnect Switchyard
- ▭ Setbacks
- ▭ Environmental Avoidance Area

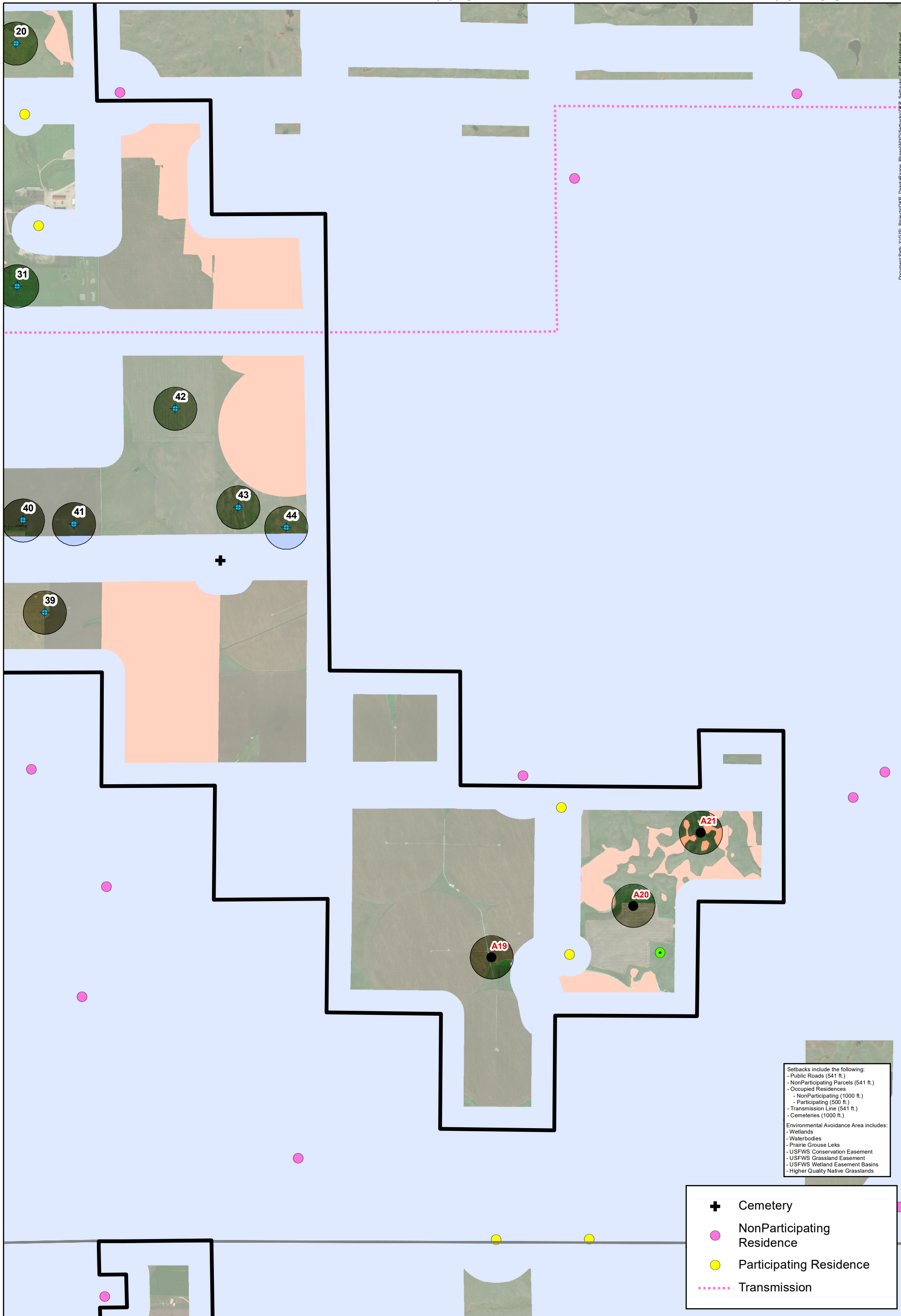
Note:
 1. Turbines are not drawn to scale.
 2. Turbine numbering is not sequential.

00.00 0.1 0.2 0.3 0.4 Kilometers
 0 0.05 0.1 0.2 0.3 0.4 Miles

Coordinate System: NAD 1983 StatePlane South Dakota North FIPS 4001 Feet
 Projection: Lambert Conformal Conic
 Datum: North American 1983
 False Easting: 1,968,500.0000
 False Northing: 0.0000
 Units: Foot US

APEX CLEAN ENERGY

Date: 6/8/2018
 Author: MR



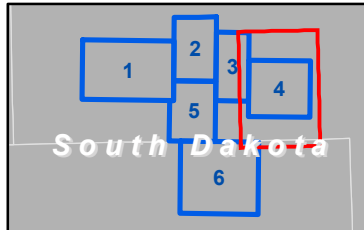
Setbacks include the following:

- Public Roads (541 ft.)
- NonParticipating Parcels (541 ft.)
- Occupied Residences
 - NonParticipating (1000 ft.)
 - Participating (500 ft.)
- Transmission Line (541 ft.)
- Cemeteries (1000 ft.)

Environmental Avoidance Area includes:

- Wetlands
- Waterbodies
- Prairie Grouse Leaks
- USFWS Conservation Easement
- USFWS Grassland Easement
- USFWS Wetland Easement Basins
- Higher Quality Native Grasslands

- + Cemetery
- NonParticipating Residence
- Participating Residence
- Transmission



Dakota Range Wind
Project Micrositing
Grant and Codington County, SD
 45.159283, -97.058736

- + Preliminary Turbine Location (LAY 041)
- Removed Turbine (LAY 038)
- 500 ft. Turbine Flexibility Area
- Project Area Boundary
- Setbacks
- Environmental Avoidance Area

Note:
 1. Turbines are not drawn to scale.
 2. Turbine numbering is not sequential.

00.075 0.15 0.3 0.45 0.6
 Kilometers

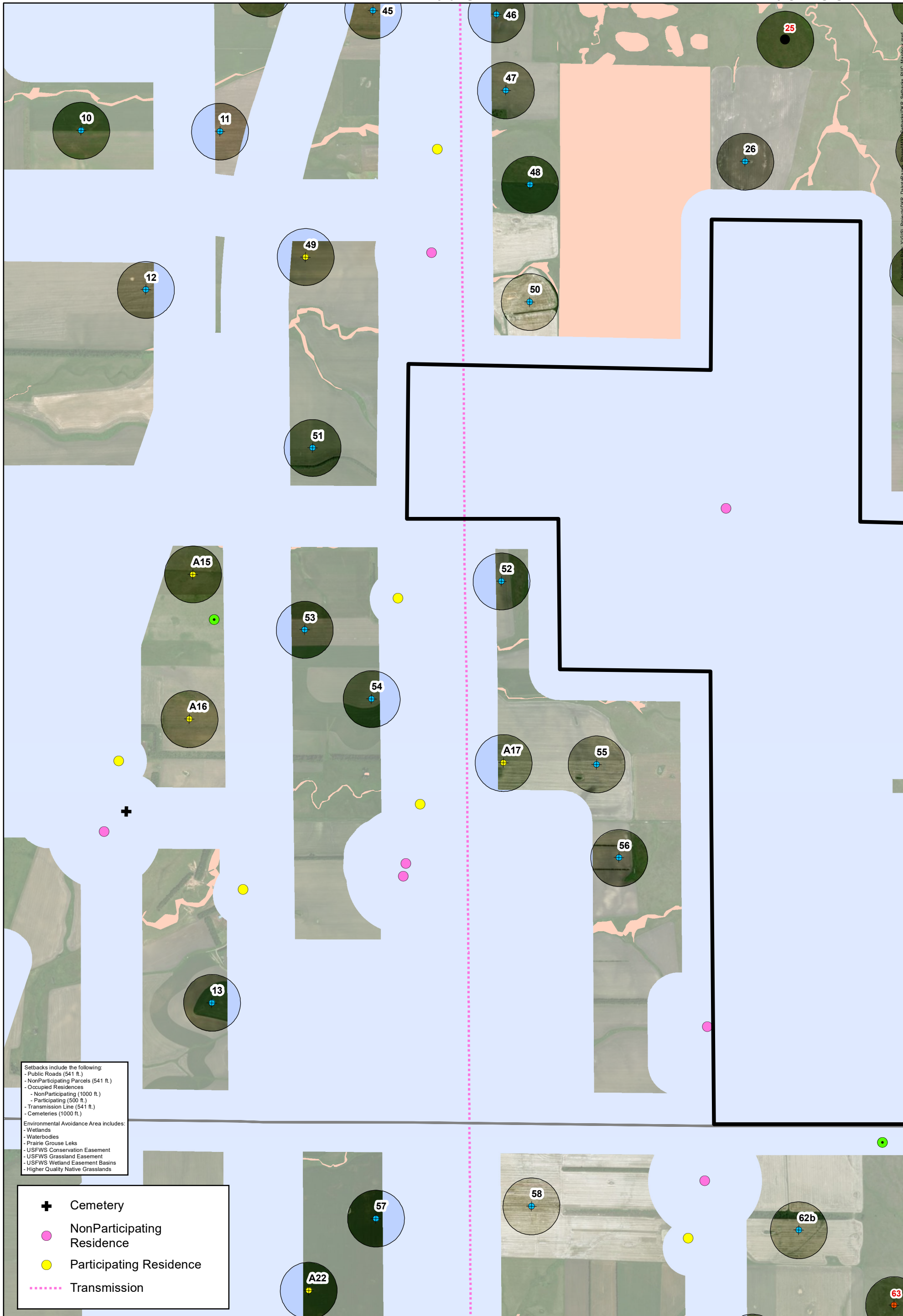
0 0.075 0.15 0.3 0.45 0.6
 Miles

Coordinate System: NAD 1983 StatePlane South Dakota North FIPS 4001 Feet
 Projection: Lambert Conformal Conic
 Datum: North American 1983
 False Easting: 1,968,500.0000
 False Northing: 0.0000
 Units: Foot US

APEX
 CLEAN ENERGY

Date: 6/8/2018
 Author: MR

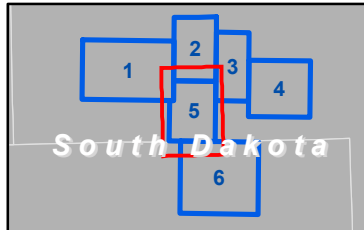
Document Path: Y:\GIS\Projects\DKG_Casefile\Range_Phase1\MXD\Setbacks\DKR_Setbacks_PUC_Mapbook.mxd



Setbacks include the following:
 - Public Roads (541 ft.)
 - NonParticipating Parcels (541 ft.)
 - Occupied Residences
 - NonParticipating (1000 ft.)
 - Participating (500 ft.)
 - Transmission Line (541 ft.)
 - Cemeteries (1000 ft.)

Environmental Avoidance Area includes:
 - Wetlands
 - Waterbodies
 - Prairie Grouse Leaks
 - USFWS Conservation Easement
 - USFWS Grassland Easement
 - USFWS Wetland Easement Basins
 - Higher Quality Native Grasslands

- Cemetery
- NonParticipating Residence
- Participating Residence
- Transmission



Dakota Range Wind
Project Micrositing
Grant and Codington County, SD
 45.159283, -97.058736

- Preliminary Turbine Location (LAY 041)
- Proposed Spare Turbine Location (LAY 041)
- Moved Turbine (LAY 038)
- Removed Turbine (LAY 038)
- Temporary MetTower, Existing

- Project Area Boundary
- Setbacks
- Environmental Avoidance Area
- 500 ft. Turbine Flexibility Area

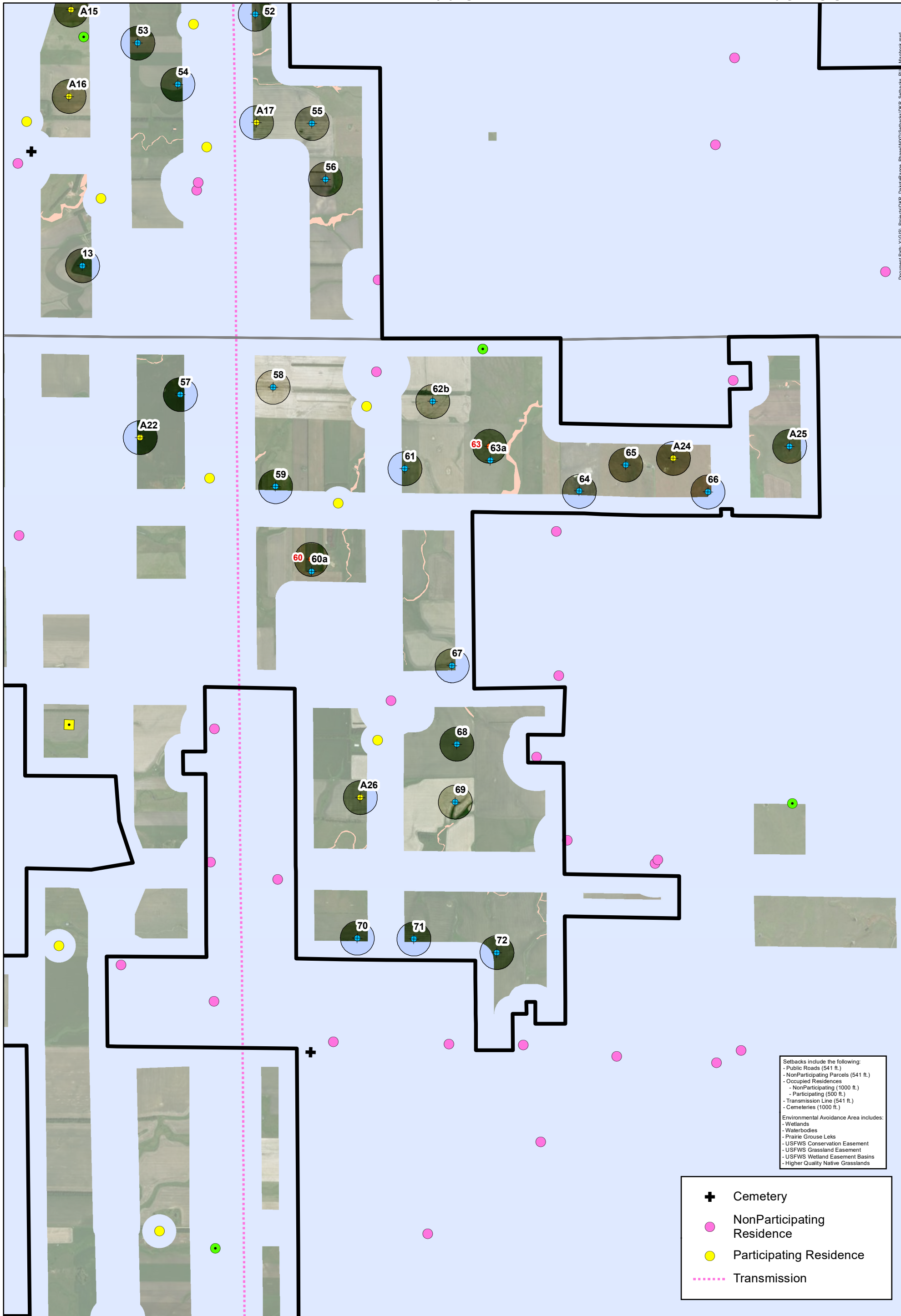
Note:
 1. Turbines are not drawn to scale.
 2. Turbine numbering is not sequential.

00.00 0.1 0.2 0.3 0.4
 0 0.05 0.1 0.2 0.3 0.4
 Kilometers Miles

Coordinate System: NAD 1983 StatePlane South Dakota North FIPS 4001 Feet
 Projection: Lambert Conformal Conic
 Datum: North American 1983
 False Easting: 1,968,500.0000
 False Northing: 0.0000
 Units: Foot US

APEX
 CLEAN ENERGY

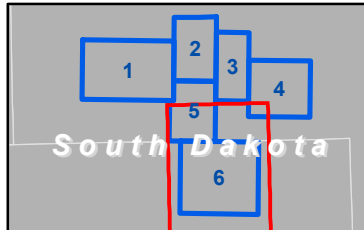
Date: 6/8/2018
 Author: MR



Setbacks include the following:
 - Public Roads (541 ft.)
 - NonParticipating Parcels (541 ft.)
 - Occupied Residences
 - NonParticipating (1000 ft.)
 - Participating (500 ft.)
 - Transmission Line (541 ft.)
 - Cemeteries (1000 ft.)

Environmental Avoidance Area includes:
 - Wetlands
 - Waterbodies
 - Prairie Grouse Leaks
 - USFWS Conservation Easement
 - USFWS Grassland Easement
 - USFWS Wetland Easement Basins
 - Higher Quality Native Grasslands

+ Cemetery
 ● NonParticipating Residence
 ● Participating Residence
 - - - - - Transmission



Dakota Range Wind
Project Micrositing
Grant and Codington County, SD
 45.159283, -97.058736

● Preliminary Turbine Location (LAY 041)
 ● Proposed Spare Turbine Location (LAY 041)
 ● Moved Turbine (LAY 038)
 ● Temporary MetTower, Existing
 ● PermanentMet, Proposed

Project Area Boundary
 Setbacks
 Environmental Avoidance Area
 500 ft. Turbine Flexibility Area

Note:
 1. Turbines are not drawn to scale.
 2. Turbine numbering is not sequential.





0 0.1 0.2 0.4 0.6 0.8
 Kilometers
 0 0.1 0.2 0.4 0.6 0.8
 Miles

Coordinate System: NAD 1983 StatePlane South Dakota North FIPS 4001 Feet
 Projection: Lambert Conformal Conic
 Datum: North American 1983
 False Easting: 1,968,500.0000
 False Northing: 0.0000
 Units: Foot US

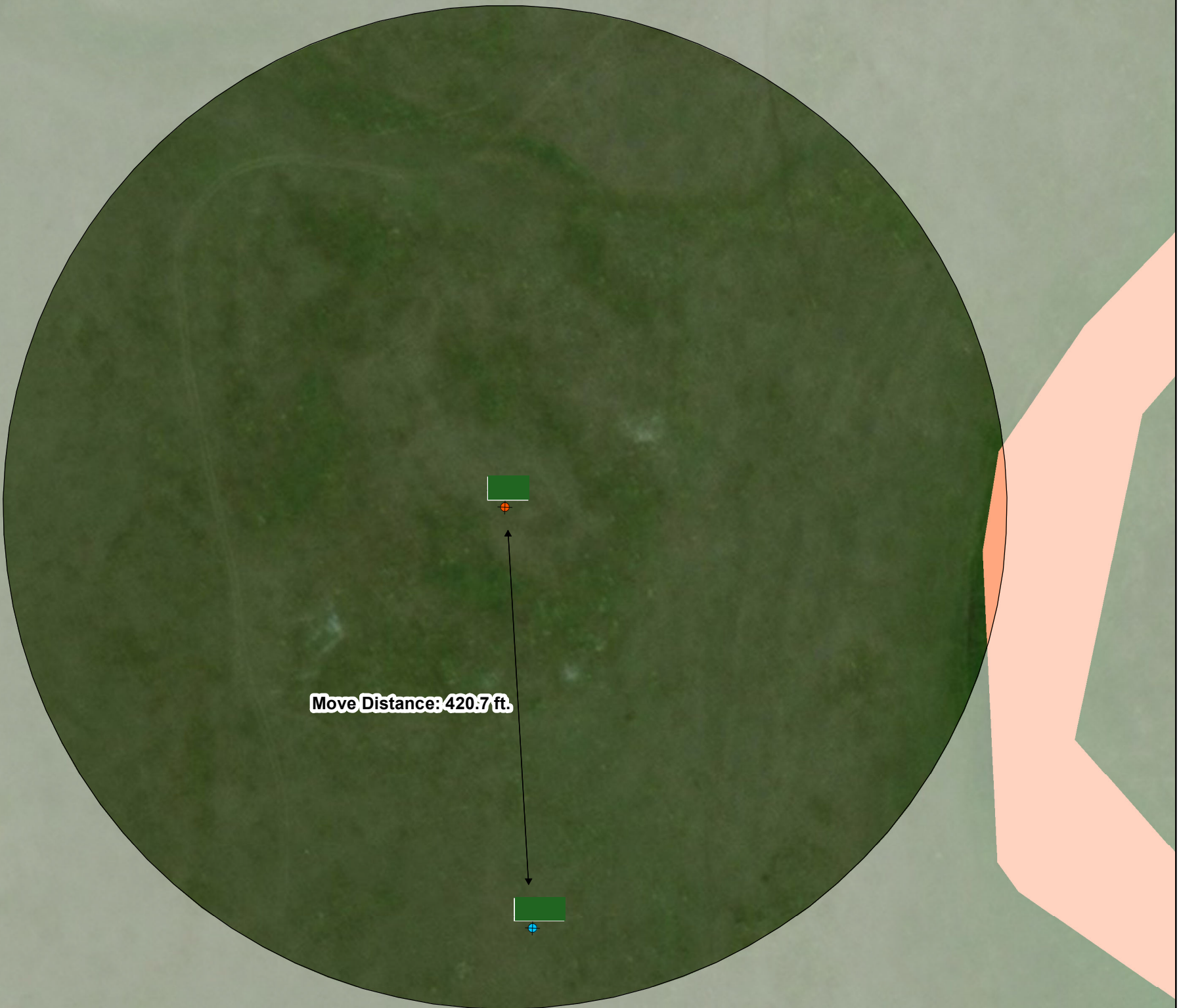
APEX
 CLEAN ENERGY

Date: 6/8/2018
 Author: MR

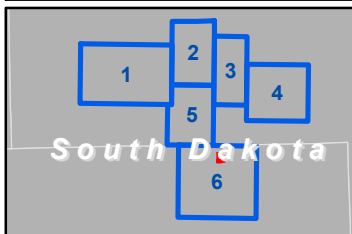
Document Path: Y:\GIS\Projects\DKR_Setbacks\DKR_Setbacks_PU_Mapbook.mxd

-  Cemetery
-  Participating Residence
-  NonParticipating Residence
-  Transmission







- Setbacks include the following:
- Public Roads (541 ft.)
 - NonParticipating Parcels (541 ft.)
 - Occupied Residences
 - NonParticipating (1000 ft.)
 - Participating (500 ft.)
 - Transmission Line (541 ft.)
 - Cemeteries (1000 ft.)
- Environmental Avoidance Area includes:
- Wetlands
 - Waterbodies
 - Prairie Grouse Leaks
 - USFWS Conservation Easement
 - USFWS Grassland Easement
 - USFWS Wetland Easement Basins
 - Higher Quality Native Grasslands



Document Path: Y:\GIS\Projects\DRG_Cardiff\Stage_Planet\MO\Setbacks\DRR_Setbacks_PUC_Mapbook_Moves.mxd



Dakota Range Wind
Project Micrositing
Grant and Codington County, SD
45.159283, -97.058736

-  Preliminary Turbine Location (LAY 041)
-  Moved Turbine (LAY 038)
-  500 ft. Turbine Flexibility Area
-  Project Area Boundary
-  Setbacks
-  Environmental Avoidance Area


Note:
 1. Turbines are not drawn to scale.
 2. Turbine numbering is not sequential.

0 0.00625 0.0125 0.01875 0.025 0.03125 0.0375 0.04375 0.05

0 0.00475 0.0095 0.019 0.0285 0.038

Kilometers Miles

Coordinate System: NAD 1983 StatePlane South Dakota North FIPS 4001 Feet
 Projection: Lambert Conformal Conic
 Datum: North American 1983
 False Easting: 1,968,500.0000
 False Northing: 0.0000
 Units: Foot US



Date: 6/6/2018
 Author: MR